

IMPACT
IMPACT
IMPACT

**Ro-Tap Sieve Shaker
SV012**

Impact Test Equipment Ltd
www.impact-test.co.uk - www.impact-test.com
www.impact-testsets.co.uk

www.impact-test.com
www.impact-test.co.uk
www.impact-testsets.co.uk

User Guide
User Guide
User Guide



**Impact Test Equipment Ltd.
Building 21 Stevenston Ind. Est.
Stevenston
Ayrshire
KA20 3LR**

T: 01294 602626

F: 01294 461168

E: sales@impact-test.co.uk

**Test Equipment
www.impact-test.co.uk**

**Test Sieves & Accessories
www.impact-test.com**

**Test Sets to International Standards
www.impact-test.co.uk**

TABLE OF CONTENTS

For SV012 please refer to RX-29

Page #

| | |
|---|---|
| Table of Contents | 1 |
| Set-up and Start-up | 2 |
| Hammer Drop Adjustment | 3 |
| RX-29, RX-30 Ro-Tap [®] Parts Diagram | 4 |
| RX-29, RX-30 Ro-Tap Parts List | 5 |



SET-UP & START-UP

Ro-Tap® RX MODELS

Installation

The sieve shakers (**Ro-Tap**® Models RX-29 & RX-30 & Coarse Model RX-812) must be mounted on a **Ro-Tap**® Test Stand (R-40041), concrete foundation or heavy bench capable of supporting 200 lbs. Moderate tension of the mounting bolts is all that is required.

Basic Operation

A) Ro-Tap®

Assemble a stack of sieves, beginning with the top cover, the coarsest (largest) sieve opening on top, with a pan on the bottom. Place the stack into the shaker, with the hammer tilted up and out of the way. Place the **Ro-Tap**® sieve cover, with the plug installed, on top of the sieve stack. The sieve support clamp bar is then adjusted, by loosening/tightening the two adjustable handles. Press the yellow buttons and turn handles in the appropriate direction. Bring the top of the Ro-Tap® sieve cover flush with the top of the upper carrying plate.

NOTE: Some force may be required to move the support clamp bar on the **Ro-Tap**® II (RX-94). This is due to the resistance of the gas safety spring.

B) Coarse Sieve Shaker

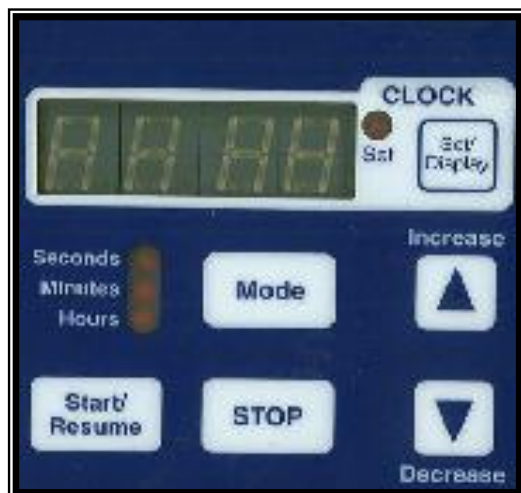
Assembly of the sieve stack is the same as with the **Ro-Tap**®. The clamping assembly is adjusted from the top down by screwing the two knobs down on the threaded clamp bars.

Starting the Shaker (Timer Function)

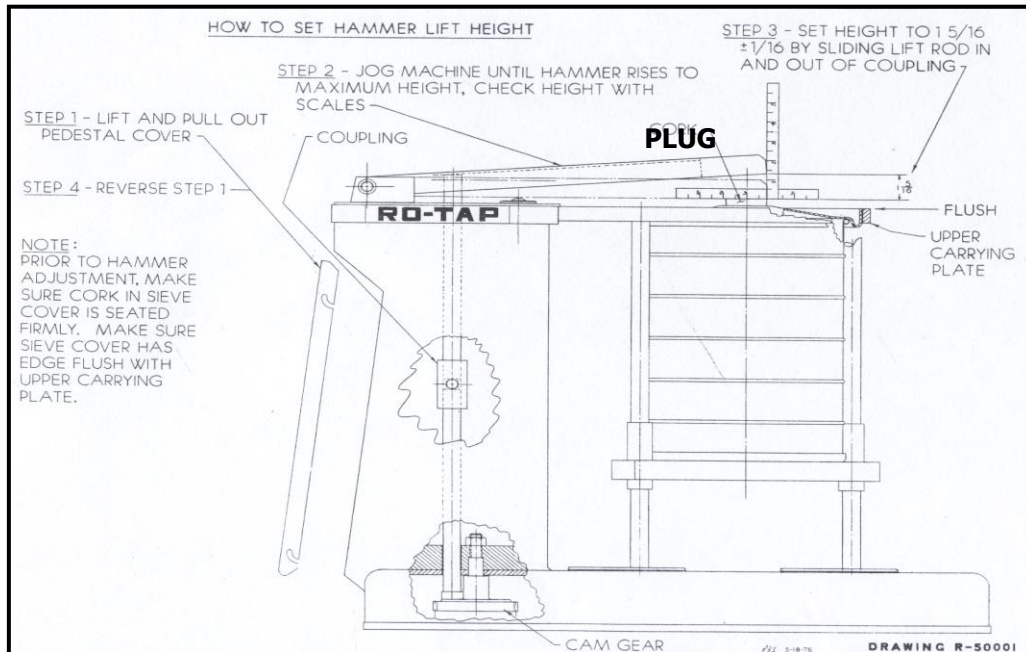
Make sure a sieve stack is in place at the time. To set the test run time, set the test duration by pushing the increase button until the desired time appears in the digital window. Push the start button to begin the test. An audible tone will be heard at the end of the test.

Should you wish to stop or interrupt the test at any time, simply push the stop button. Note that the remaining test time is frozen on the readout. To continue, simply push the start button. Once a test is complete, if you wish to repeat the prior process, simply push the start button. The most recent time will remain in memory.

NOTE: The timing device also has a clock function. To use this option, hold the "clock" set/display button and adjust the proper time with the increase/decrease buttons.



HAMMER DROP ADJUSTMENT



SETTING THE HAMMER LIFT HEIGHT

Ro-Tap® MODELS: RX-29 and RX-30 and RX-94

(NOTE: THIS SETTING HAS BEEN MADE ON ALL NEW UNITS)

- NOTE: Prior to hammer adjustment; make sure plug is seated firmly in sieve cover. Make sure sieve cover has top edge flush with upper carrying plate. A stack of sieves must be used to achieve this setting.
- STEP 1: Remove pedestal cover.
- STEP 2: Jog machine until hammer rises to maximum height or use a box wrench on the hex head screw, located on top of the pedestal. Check height with scales.
- STEP 3: Set height to $1\frac{5}{16} \pm \frac{1}{16}$ " by loosening screw on coupling and adjusting lift rod.
- STEP 4: Tighten screw on coupling.
- STEP 5: Replace pedestal cover.

Lubrication

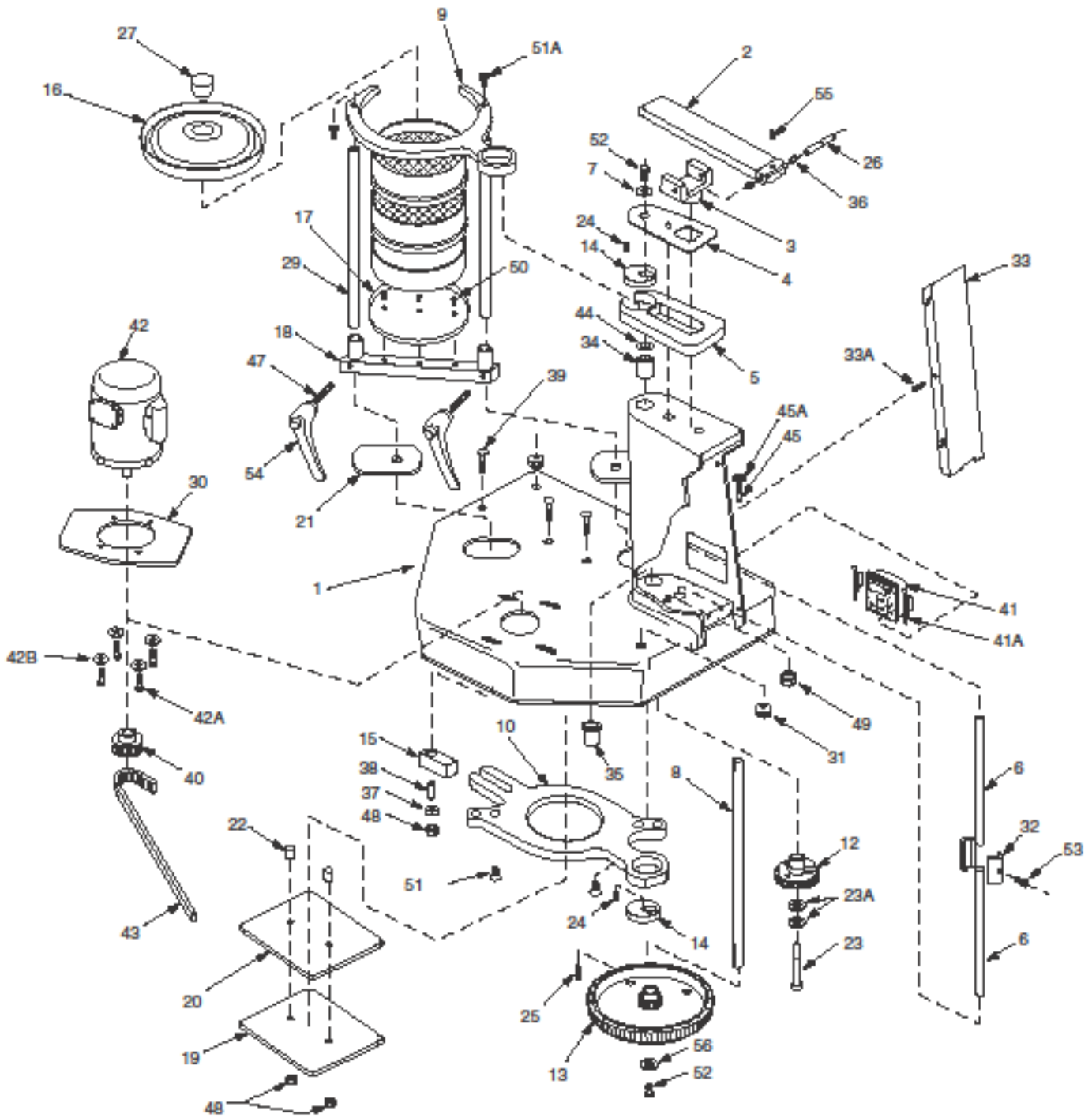
The Sieve Shakers require only minimal periodic lubrication. The units incorporate plastic and oil-impregnated bronze bearing materials, which are self-lubricating. A few drops of light oil or WD-40™ every six months is all that is necessary to prevent drying of the parts. Application of the same lubricants will suffice if a squeak or a drag should develop in the mechanism.

PLEASE BE ADVISED: Review these warnings prior to use

| WARNING | |
|----------------|--|
| E | Before removing cover set timer to zero and disconnect the power! |
| D | Vor Öffnung der Maschine Zeitschaltuhr auf 0 stellen und Netzstecker ziehen! |
| F | Tableau indicateur: Avant l'ouverture de la machine veuillez régler la minuterie à 0 et retirer la fiche de contact! |
| S | Advertencia: Ponga el marcador en zero y desconecte la electricidad antes de quitar la tapa! |

| WARNING |
|--|
| DO NOT USE THIS EQUIPMENT WHERE HAZARDOUS OR EXPLOSIVE DUST, VAPOR OR LIQUIDS MAY BE PRESENT |
| DO NOT MOUNT ON COMBUSTIBLE SURFACES |

RX-29 & RX-30 Ro-Tap® PARTS DIAGRAM



RX-29 & RX-30 Ro-Tap® PARTS LIST

4

| ITEM | PART | DESCRIPTION | QTY REQ'D |
|------|-----------|---|-----------|
| 1 | 107770 | Base | 1 |
| 2 | R-20029 | Hammer | 1 |
| 3 | R-20023 | Hammer Block | 1 |
| 4 | R-30019 | Sheet Guard | 1 |
| 5 | R-30010 | Rotating Guard | 1 |
| 6 | R-10036 | Lift Rod | 2 |
| 7 | R-10038 | Upper Main Shaft Washer | 1 |
| 8 | R-20027 | Main Shaft | 1 |
| 9 | R-30008 | Upper Carrying Plate/RX-29 | 1 |
| 9a | R-30008-1 | Upper Carrying Plate (alum) | 1 |
| 9 | R-30027 | Upper Carrying Plate/RX-30 | 1 |
| 10 | R-30009 | Lower Carrying Plate | 1 |
| 12 | R-20039 | Cam Gear | 1 |
| 13 | R-30015 | Timing Belt Pulley | 1 |
| 14 | R-10034 | Eccentric Disc | 2 |
| 15 | R-10032 | Block | 1 |
| 16 | R-30007 | Sieve Cover (RX-29) | 1 |
| 16 | R-30011 | Sieve Cover (RX-30) | 1 |
| 17 | R-30006 | Sieve Support Plate (RX-29) | 1 |
| 17 | R-30013 | Sieve Support Plate (RX-30) | 1 |
| 18 | R-30023 | Sieve Support Clamp Bar (RX-29) | 1 |
| 18 | R-30022 | Sieve Support Clamp Bar (RX-30) | 1 |
| 19 | R-20019 | Backup Plate | 1 |
| 20 | R-20020 | Bearing Plate | 1 |
| 21 | R-20033 | Shield | 2 |
| 22 | R-10028 | Tube Spacer | 2 |
| 23 | R-10029 | Cam Shoulder Screw | 1 |
| 23A | 106582 | I.D. Shim | 2 |
| 24 | R-10042 | Main Shaft Key to Eccentric | 2 |
| 25 | R-10039 | Main Shaft Key-Lower | 1 |
| 26 | R-10035 | Hammer Pin | 1 |
| 27 | R-10066 | Cork plug | 1 |
| 28 | 108184 | Name Plate | 1 |
| 29 | R-10033 | Tie-Rod | 2 |
| 30 | R-30018 | Motor Adapter | 1 |
| 31 | ZA11167 | Grommet | 2 |
| 32 | R-10030 | Lift Rod Coupling(2.50" Long) | 1 |
| 33 | R-40011 | Pedestal Cover | 1 |
| 33A | 8/18 X 75 | Self Tapping Screw | 1 |
| 34 | R-10061 | Flange Bearing | 1 |
| 35 | R-10062 | Bearing | 1 |
| 36 | R-10063 | Flange Bearing | 2 |
| 37 | ZF10168 | Thrust Washer | 1 |
| 38 | R-10065 | Steel Bushing | 1 |
| 39 | ZF10174 | 3.8-16 NC X 2.25" Carriage Bolt | 3 |
| 40 | R-10070 | Sprocket-14-Teeth (1800 RPM) w/Set Screw | 1 |
| | | Sprocket-17-Teeth (1500 RPM) w/Set Screw | 1 |
| 41 | R-40029 | Electronic Timer (115v) | 1 |

| ITEM | PART | DESCRIPTION | QTY REQ'D |
|------|-----------|--|-----------|
| 41 | R-40037 | Electronic Timer (230v) | 1 |
| 41A | R-40040 | Timer Mounting Clip | 2 |
| 42 | P-1500-23 | Motor-Standard 115/230v 60/50Hz 1Phase | 1 |
| 42A | ZF10183 | 3/8-16 x 1" Hex Flange Bolt | 4 |
| 43 | R-10058 | Timing Belt | 1 |
| 44 | R-10055 | Shim | 1 |
| 45 | ZZ10068 | 1/2-13 x 2.50" Long Hex Hd. Bolt | 1 |
| 45A | ZZ10323 | 1/2 I.D. Lock Washer | 1 |
| | | | 1 |
| 47 | R-10079 | Clamp Screw | 2 |
| 48 | ZF10221 | 3/8" Lock Nut | 3 |
| 49 | ZF10222 | 1/2" Hex Lock Nut | 1 |
| 50 | ZF10231 | 10-32x.50" LongFlatHeadSocketCap Screw | 3 |
| 51 | ZF10241 | 3/8-16x.75"LongFlatHeadSocketCap Screw | 2 |
| 51A | ZF10183 | 3/8-16x1" Hex Flange Bolt | 2 |
| 52 | 114162 | 3/6-16x x 62" Long Hex Head Screw | 2 |
| 53 | ZF10251 | 5/16-24x1.25" LongSocket HeadCapScrew | 1 |
| 54 | R-20082 | Adj. Handle (Support Bar) | 2 |
| 55 | ZA10148 | #10-24x.25" Socket Hd. Set Screw | 1 |
| 56 | ZF10271 | 3/8 I.D. X 1.50" O.D. Fender Washer | 1 |
| 60* | R-10018 | Timer Cord w/Plug | 1 |
| 61* | R-10019 | Cable Tie Mfg | 3 |
| 62* | R-10112 | Straight Connector (APC-050) | 2 |
| 66* | 107764 | Flexible Conduit | 1 |
| 67* | R-10076 | Wire Clip | 1 |
| 68* | ZZ10011 | Screw For Wire Clip & Ground Screw | 3 |
| 69* | R-20081 | Wrench | 1 |

***ITEMS NOT SHOWN**
***PARTS SOLD AS EACH**

5